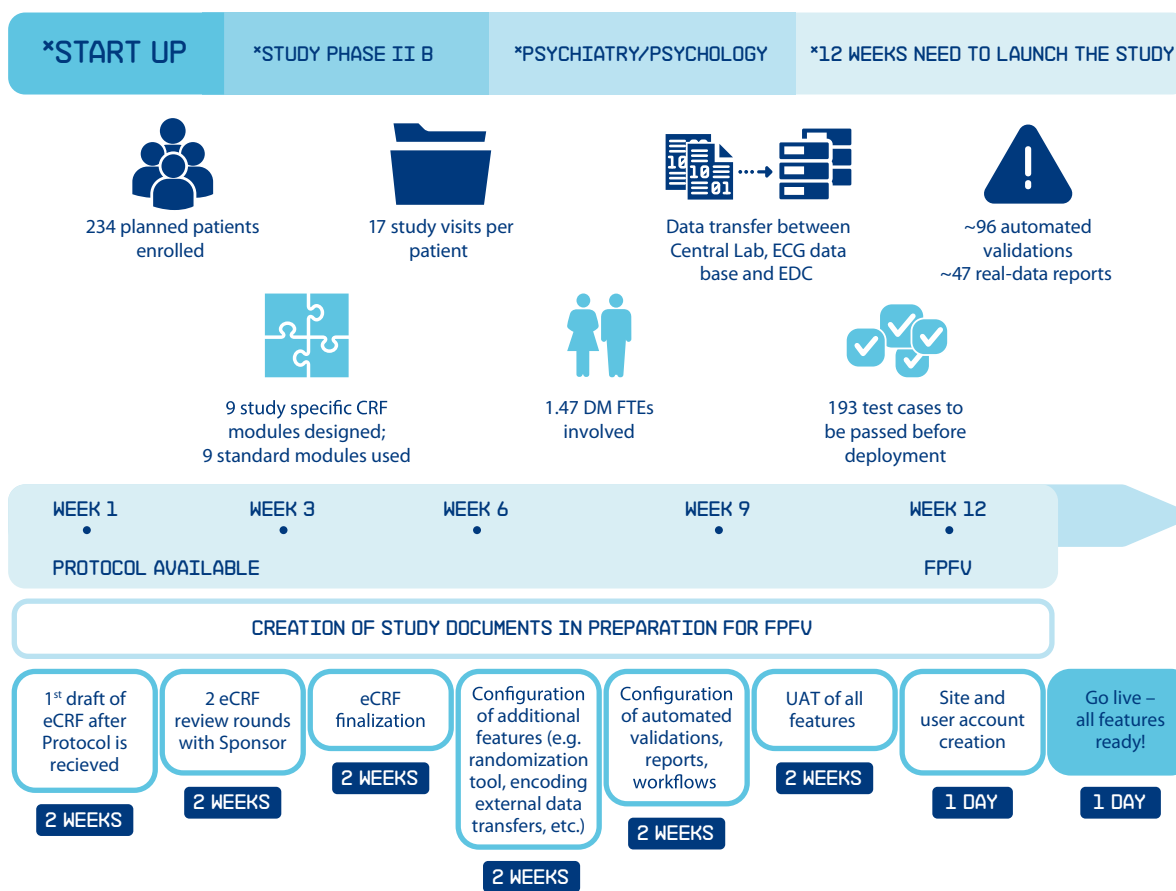


# CASE STUDY START-UP PROCESS

**Start-up process at KCR is designed to set up the Electronic Data Capture (EDC) tool within a maximum of 12 weeks.** Such a competitive timeline is made possible by utilizing pre-validated libraries of modules/forms, automated validations and reports. The processes ensure the EDC is available (with all features implemented) for First Patient First Visit (FPFV) to guarantee continued data entry from day one of the study.

## 12 WEEKS LAUNCH PERIOD

(PHASE IIB PSYCHIATRY/PSYCHOLOGY STUDY)



## ESTIMATED LAUNCH TIMELINES



**\* Low complexity studies** with no additional features, no external data flow

**\*\* Medium complexity studies** with limited number of traditional features (eg. built-in randomization tool set-up)

**\*\*\* High complexity studies** with additional features and external data flow

KCR is a Contract Research Organization (CRO) providing strategic clinical development solutions for the pharmaceutical, biotechnology and medical device industries. Our Biometrics and Clinical Trial Data Execution Systems Team ensures comprehensive, professional support in data management and clinical statistics based on precise processes and premier technology.