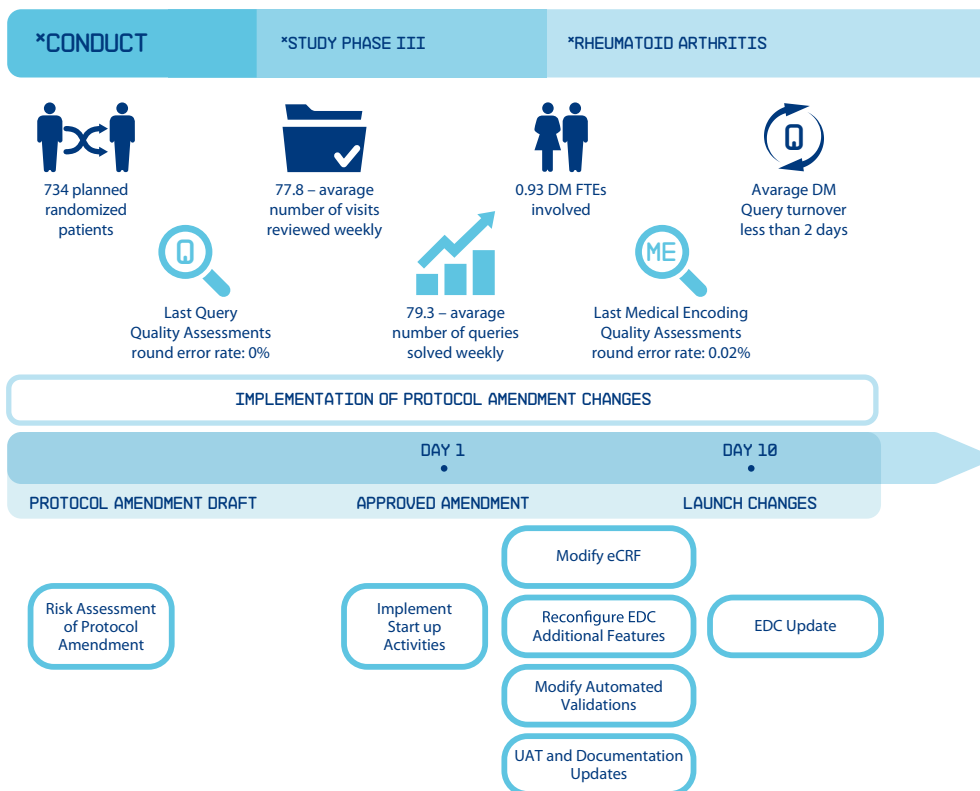
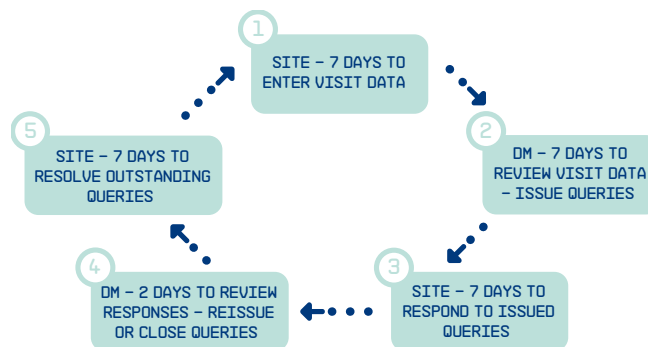


The conduct process at KCR ensures accurate prediction, prevention and dependable reaction on the data collected within a timely manner. Our experienced Data Management Protocol Leads meticulously control the data flow by help of statistical analysis tools and implemented risk based monitoring approach methods to ensure the highest quality of the data collected.

CONTINUOUS DATA HANDLING
(PHASE III RHEUMATOID ARTHRITIS STUDY)



KCR'S DATA MANAGEMENT ENSURES AN ONGOING DATA REVIEW WITHIN PREDEFINED TIMELINES



KCR is a Contract Research Organization (CRO) providing strategic clinical development solutions for the pharmaceutical, biotechnology and medical device industries. Our Biometrics and Clinical Trial Data Execution Systems Team ensures comprehensive, professional support in data management and clinical statistics based on precise processes and premier technology.